

SUPSI

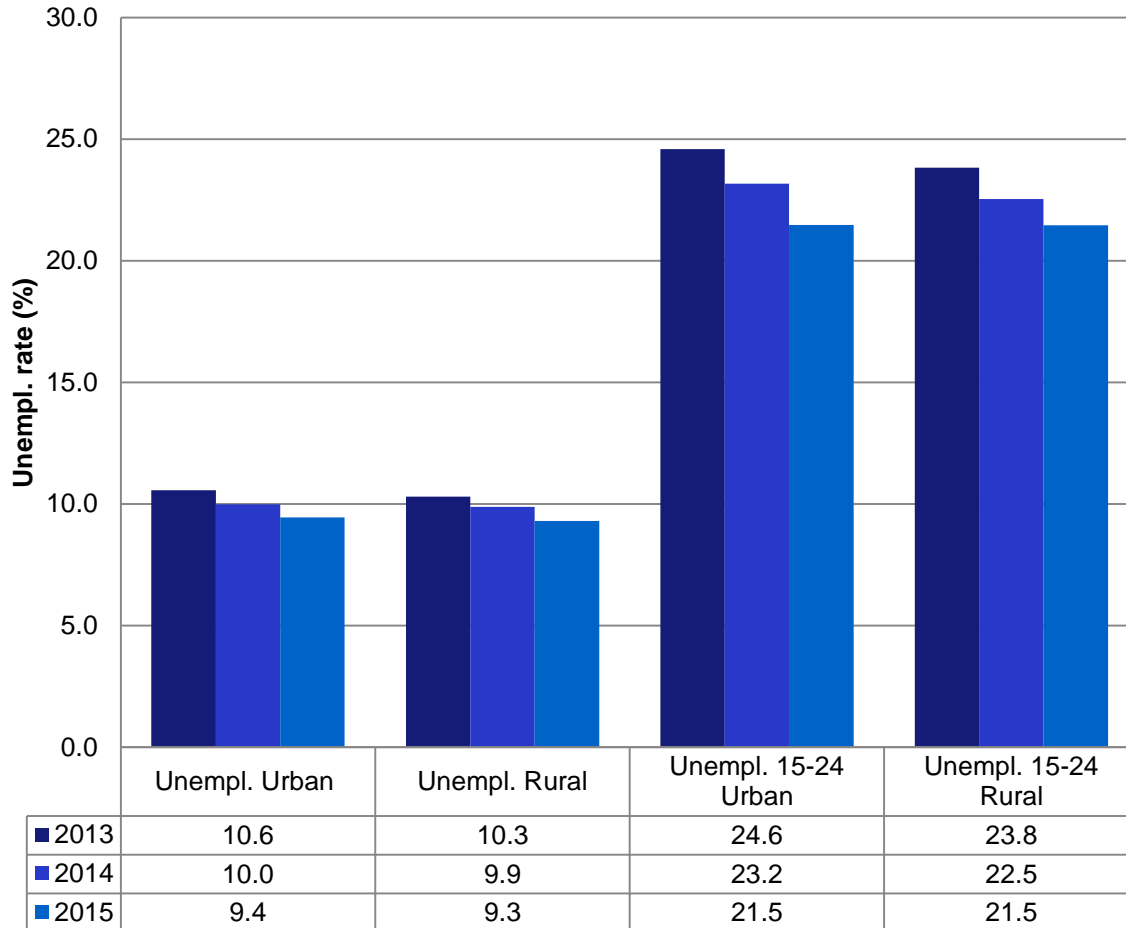
Beyond the Death Valley of Creativity

Fostering innovation and development through Youth Abilities

Siegfried Alberton, UAS Professor, inno3 Competence Centre

The Entrepreneurial Activity as a valid Working Option in the Era of Youth Unemployment

Unemployment rate (average OCDE, Urban-Rural areas, total-15/24)



Source: ILOSTAT-2016

Youth Unempl. Rate (OCDE Countries)-2015

Country	Rural	Urban
Austria	7.4	13.1
Belgium	18.4	22.9
Bulgaria	26.9	18.9
Canada		
Croatia	44.7	41.2
Cyprus	32.1	33.1
Czech Republic	12.2	12.9
Denmark	11.7	10.4
Estonia	11.2	14.5
Finland	24.3	21.8
France	21.1	26.2
Germany	5.6	7.7
Greece	51.5	49.1
Hungary	18.1	16.6
Iceland	7.3	9.1
Ireland	23.2	19.3
Italy	36.9	41.6
Latvia	19.6	14.2
Lithuania	17.5	15
Luxembourg	16.8	17.8
Malta	9.7	11.9
Mexico	4.8	9.8
Mongolia		
Netherlands	9.2	11.6
Norway	9.8	10
Poland	22	19.6
Portugal	31.9	32
Romania	18.9	25.1
Slovakia	29.2	23.5
Slovenia	16.6	15.9
South Africa	61.7	51.2
Spain	48.8	48.1
Sweden	20	20.6
Switzerland	7.6	9
United Kingdom	11.5	15

Chômage des jeunes, en 2015

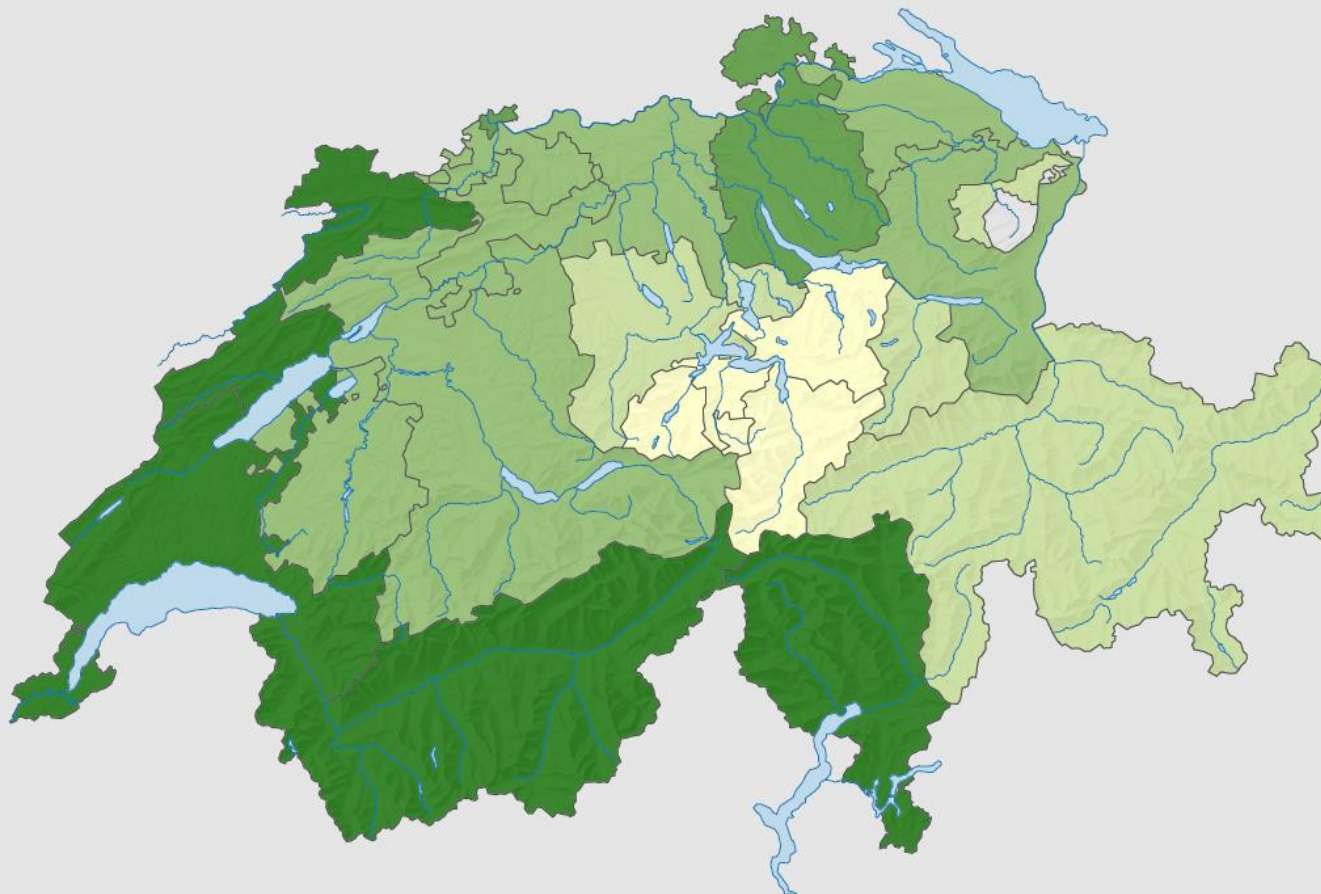
Part des chômeurs de 15-24 ans dans la population active* du même âge, en %

- ≥ 4,5
- 3,5 - 4,4
- 2,5 - 3,4
- 1,5 - 2,4
- < 1,5

□ sans indication (-)

Suisse: 3,3

*Tirée du Relevé structurel 2010 (fonctionnaires internationaux intégrés)

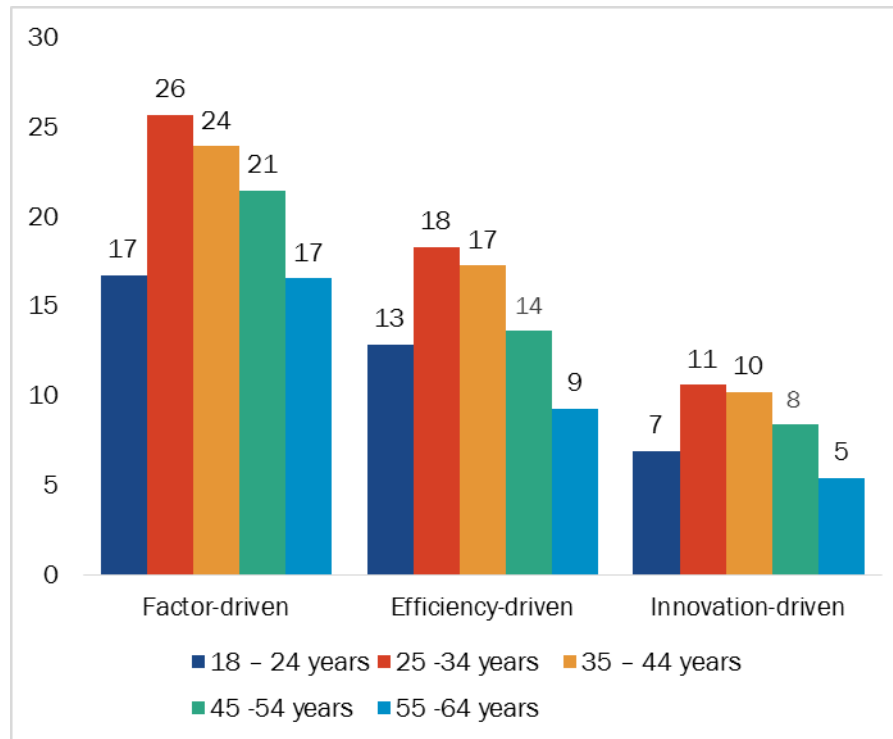


0 25 50 km

Niveau géographique:
Cantons

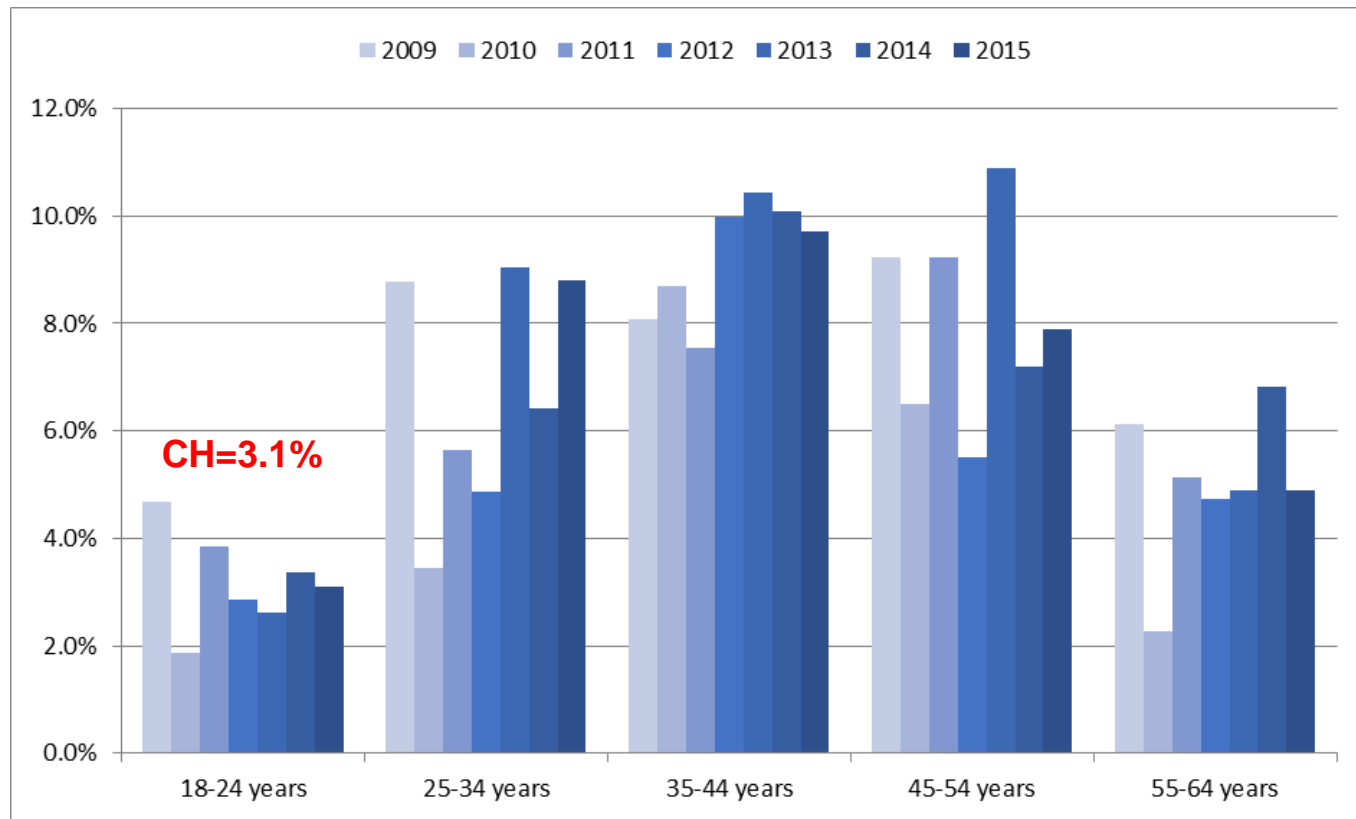
Despite the level of Youth Unemployment, and perceived opportunities, the Rate of Young Entrepreneurship is generally low

Total Early-Stage Entrepreneurial Activity (TEA) by Age and stage of economic development, 2015



Source: GEM-2015

Total Early-Stage Entrepreneurial Activity (TEA) in Switzerland by Age, 2009-2015



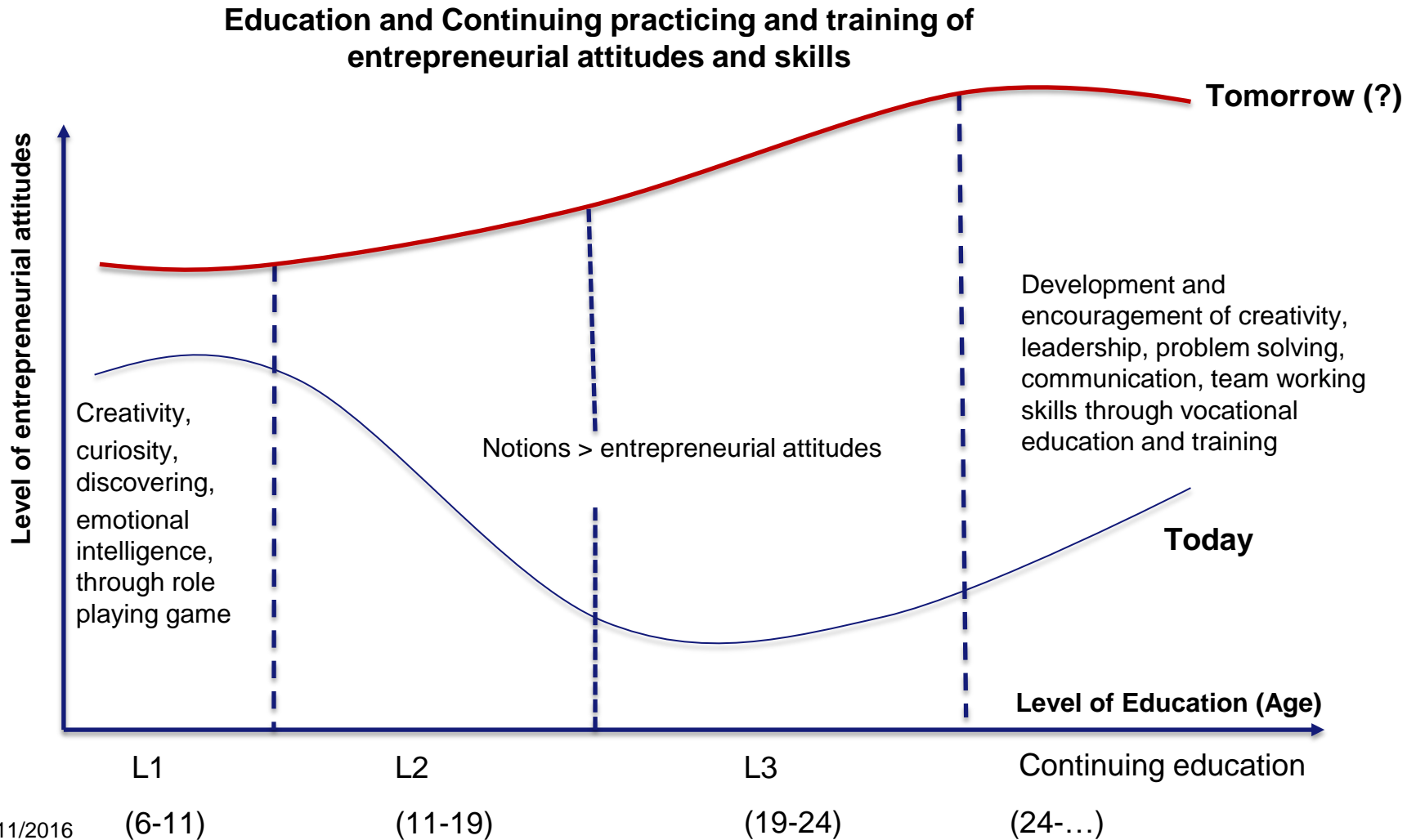
Source: GEM-2015

Where is the Problem?

Some Hypothesis and a Conviction

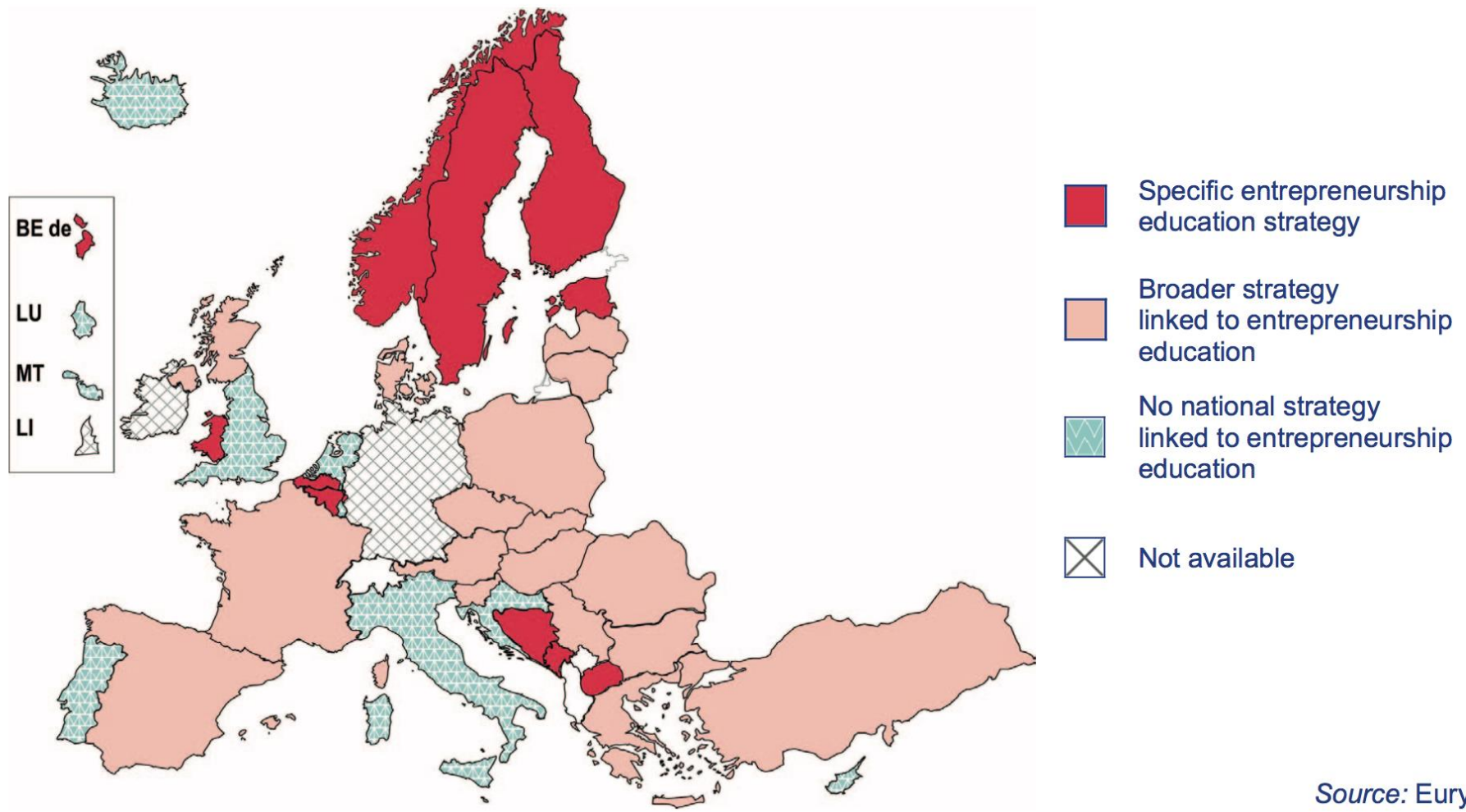
- **I1:** Preference for dependent Jobs (Comfort Zone)?
- **I2:** Preference for some year of professional experience before starting up a new venture?
- **I3:** Lack in the educational system?
- **I4:** Lack in the institutional system (i.e. entrepreneurship education strategy)?
- **C: Need for a clear Entrepreneurship Education strategy mainly for the Secondary School**

The Death Valley of creativity and entrepreneurial attitudes



What are the solutions?

Figure 2.3: Most relevant central level strategies related to entrepreneurship education, 2014/15



Source: Eurydice.

Long life Education and Continuing practicing and training of entrepreneurial attitudes and skills

- Preparing teachers for entrepreneurial education with specific guidelines and teaching methods since the basic teacher training (experiential learning and project work have a main role in this).
- Intensifying Entrepreneurial Education at School, mainly in the Secondary School, in the required courses and in direct contact with the real world
- Ensuring sufficient and stable financial resources for entrepreneurial education through a declared strategy and the monitoring of its implementation

European Commission, *Entrepreneurship Education at School in Europe* (Eurydice, 2012)
https://webgate.ec.europa.eu/fpfis/mwikis/eurydice/index.php/Publications:Entrepreneurship_Education_at_School_in_Europe

Eruopean Commission, *Entrepreneurship Education at School in Europe - 2016 Edition* (Eurydice, 2016)
<http://ec.europa.eu/eurydice>

What has all this to do with Alpine regions?

It has to do with...

- The risk that in the peripheral regions the entrepreneurial education would be neglected or underestimated and therefore the regional development dynamic threatened:
 - After the primary and part of the secondary school, people usually continue their educational process in urban areas.
 - Research shows that pupils and students who have participated to entrepreneurial education programs are three to six times more likely to start a business at some point later in life than those who do not receive entrepreneurship education (European Union, 2014)

If we do not encourage entrepreneurial education at this level of School we risk to loose potential future entrepreneurial and intrapreneurial skills or even potential new entrepreneurs in rural and peripheral regions (transferring them indirectly into urban regions)

In the net

- www.schooleducationgateway.eu/en/pub/resources/entrepreneurship_and_schools.htm
- <http://www.tesguide.eu/it/default.aspx>